

TIKI

MINI FUTURISTIC KEYCHAIN LIGHT

10g Ultra Lightweight

300 Lumens

Triple Light Sources

USB Rechargeable





TIKI: Head Constructed
from Stainless Steel

Superior Heat
Dissipation Capability

TIKI LE: Head Constructed
from Aluminum Alloy



Mini Body at Your Fingertips

With a transparent and frosted body constructed from durable PC (V0) materials which are commonly used in aerospace and electronics industries, the TIKI/TIKI LE ensures a comfortable and steady grip and serves as an ultra mini and lightweight futuristic gadget.

Approx. **10** g (0.35oz)

Ultra Lightweight and Little Finger Sized

Length: 55mm (2.17")



Head Diameter:
14.7mm (0.58")



TIKI: 12g (0.42oz) TIKI LE: 10.5g (0.37oz)

This picture is the intellectual property of Nitecore. All rights to take legal action are reserved.



300 Lumens Packed in a Tiny Body

The TIKI/TIKI LE utilizes a primary OSRAM P8 LED with a total reflective optic lens to emit a uniform and soft beam.

Note: The stated data is measured in accordance with the international flashlight testing standards ANSI/NEMA FL1, using the built-in Li-ion battery (130mAh) under laboratory conditions. The data may vary in real world use due to different battery usage or environmental conditions.

This picture is the intellectual property of Nitecore. All rights to take legal action are reserved.

Versatile Auxiliary Emitters

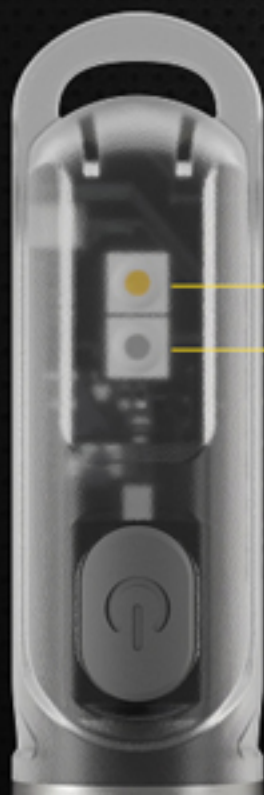
5

■ High CRI White LED

■ UV LED (500mW, 365nm)

■ Red LED

■ Blue LED



TIKI

■ High CRI White LED

■ UV LED (500mW, 365nm)



TIKI LE

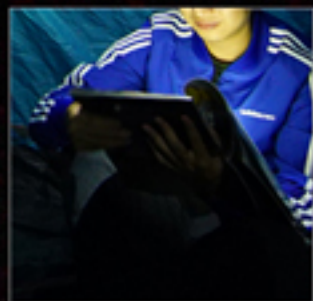
■ Red LED

■ Blue LED

Mini Camping / Reading Light



The auxiliary high CRI white LED of TIKI is able to reveal the true color of the objects, suitable for short-range illumination such as reading or camping.





CRI Value 90



CRI Value 60

Color Rendering Index (CRI)

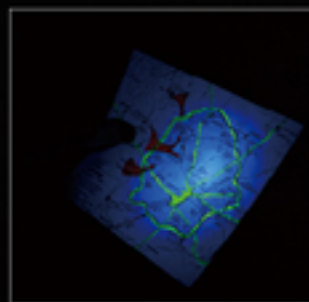
CRI is a quantitative measure of the ability of a light source to reveal the colors of various objects faithfully in comparison with an ideal or natural light source. The CRI value ranges from 0-100. The higher the value becomes, the more capable a light source is to reveal the true color of an object.

The TIKI is equipped with an auxiliary LED with high color rendering capability (CRI \geq 90), allowing for a warm and soft hotspot that resembles the nature of sunlight and giving a sharp visual while reducing eye strain.

Counterfeit Bill Detector



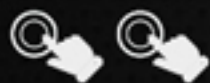
The auxiliary UV LED (500mW, 365nm) of TIKI has the ability to excite fluorescence in materials and can be used as a detector against counterfeit bills and forged documents, a fluorescent chemical tester, a phosphorescent material charger or an insect attractor.



Signal Marker

The auxiliary red and blue LEDs of TIKI LE can be used as a signal marker to indicate the location or different grouping as well as sending out signals while camping or walking.





Double Press for Constant-on

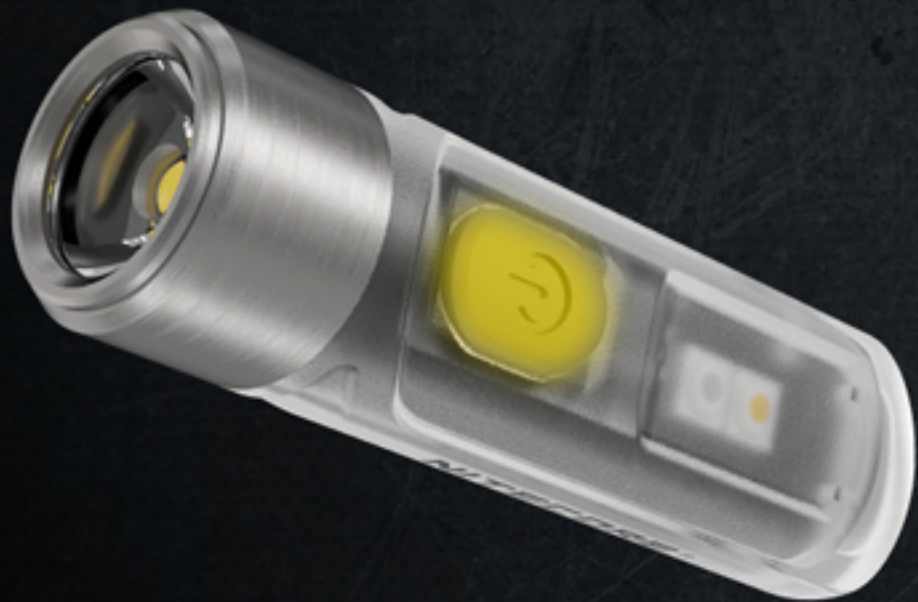
On: When the light is off, double press the Power Button to access ULTRALOW of the primary white light.

Off: When the light is on, long press the Power Button to turn it off.



When the light is on, short press the Power Button to cycle through "ULTRALOW - LOW - MID - HIGH".





Accidental Activation Protection

The design of double press effectively prevents accidental activation.



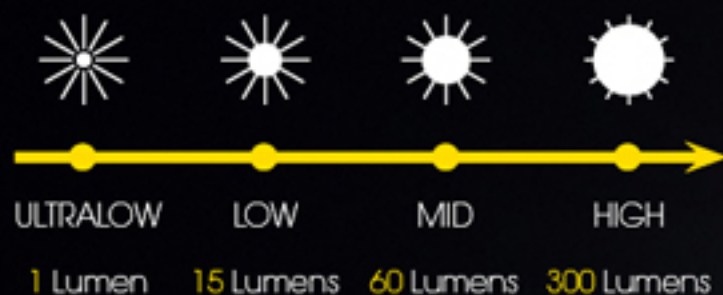
Triple Press for Auxiliary Lights

TIKI: When one of the auxiliary lights is on, short press the Power Button to cycle through "UV - Aux White Constant-on - Aux White Warning Flashing".

TIKI LE: When one of the auxiliary lights is on, short press the Power Button to cycle through "Red - Blue - Red/Blue Warning Flashing".



One Button Interface



3 Light Sources

TIKI



TIKI LE



2 Special Modes



Note: The stated data is measured in accordance with the international flashlight testing standards ANSI/NEMA FL1, using the built-in Li-ion battery (130mAh) under laboratory conditions. The data may vary in real world use due to different battery usage or environmental conditions.

This picture is the intellectual property of Nitecore. All rights to take legal action are reserved.

40 Hours Extended Runtime

The built-in 130mAh Li-ion battery has a comparable efficiency with a AAA battery.

16



Note: Panasonic is a registered trademark of Panasonic Corporation
The stated data is measured in accordance with the international flashlight testing standards ANSI/NEMA FL1, using the built-in Li-ion battery (130mAh) under laboratory conditions. The data may vary in real world use due to different battery usage or environmental conditions.

This picture is the intellectual property of Nitecore. All rights to take legal action are reserved.



USB Rechargeable

During the charging process, the blue charging indicator located beneath the switch will be steadily turned on. When the battery is fully charged, the charging indicator will be turned off.



Multiple Charging Safeguards



Overcharge Protection



Over-discharge Protection



Short-circuit Protection



Advanced Power Cut-Off (APC) Technology

An ultra-low parasitic drain of $1\mu\text{A}$ provides a

365 -day

ready experience in the standby status.

NITECORE®

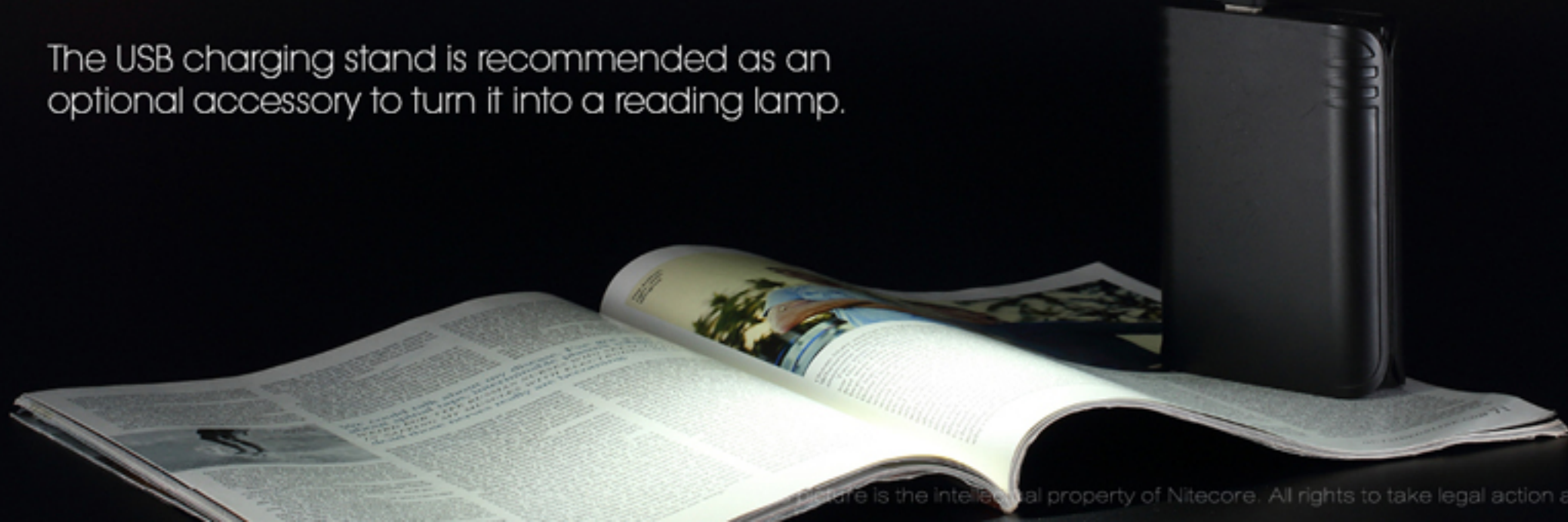
TIKI MINI FUTURISTIC KEYCHAIN LIGHT
300 Lumens Triple Light Sources

20

Continuously Powered by Multiple Sources

Get out of the outdoor illuminating predicament and enjoy the inexhaustible power supply on the go even in the charging status.

The USB charging stand is recommended as an optional accessory to turn it into a reading lamp.





Solid Ring Pull Design
Able to withstand up to 30kg
(66lbs) of weight

TIKI SPEC.

FL1 STANDARD	HIGH	MID	LOW	ULTRALOW	UV	Aux White Constant-on	Aux White Warning Flashing
	300 Lumens	60 Lumens	15 Lumens	1 Lumen	500 mW	22 Lumens	22 Lumens
	30 min	1 h	4 h	40 h	45 min	1 h 30 min	20 h
	71 m	31 m	15 m	4 m	—	—	—
	1,260 cd	250 cd	60 cd	4 cd	—	—	—
	1m (Impact Resistant)						
	IP66						

Note: The stated data is measured in accordance with the international flashlight testing standards ANSI/NEMA FL1, using the built-in Li-ion battery (130mAh) under laboratory conditions. The data may vary in real world use due to different battery usage or environmental conditions.



TIKI LE SPEC.

FL1 STANDARD	HIGH	MID	LOW	ULTRALOW	Red	Blue	Red/Blue Police Warning Flashing
	300 Lumens	60 Lumens	15 Lumens	1 Lumen	3 Lumens	0.8 Lumens	—
	30 min	1 h	4 h	40 h	1 h	45 min	1 h 45 min
	71 m	31 m	15 m	4 m	—	—	—
	1,260 cd	250 cd	60 cd	4 cd	—	—	—
	1m (Impact Resistant)						
	IP66						

Note: The stated data is measured in accordance with the international flashlight testing standards ANSI/NEMA FL1, using the built-in Li-ion battery (130mAh) under laboratory conditions. The data may vary in real world use due to different battery usage or environmental conditions.



Features

- Utilizes a primary OSRAM P8 LED with a max output of 300 lumens
- TIKI: Utilizes an auxiliary high CRI white LED (CRI≥90; Color Temperature: 4500K) and an auxiliary UV LED (Power: 500mW; Wavelength: 365nm)
- TIKI LE: Utilizes an auxiliary red LED and an auxiliary blue LED
- The primary white light utilizes a total reflective optic lens for a uniform and soft beam
- Built-in rechargeable Li-ion battery
- Built-in Li-ion battery charging circuit with a Micro-USB port
- Advanced Power Cut-Off (APC) technology for an ultralow parasitic drain
- One hand operable interface controls 3 outputs with a single switch
- Head constructed from metallic materials with a superior heat dissipation capability (TIKI: Stainless Steel; TIKI LE: Aluminum Alloy)
- Body constructed from durable PC (V0) materials
- Rating in accordance with IP66
- Impact resistant to 1 meter



IP66 Rated

The rubber cover of the charging port offers outstanding water and dust resistance.

